

DELTAMOBILE

Tactical
Trunk
Communication
System

System
Summary

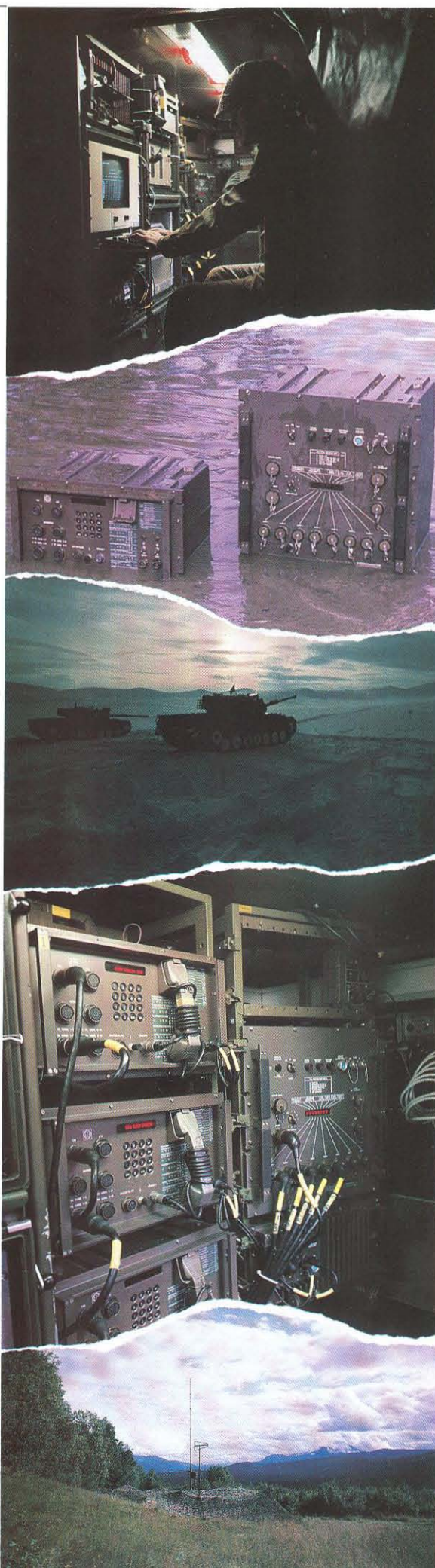


DELTAMOBILE is a tactical trunk communication system for switching and transmission of voice and data services.

The system is made up of a few lightweight and self-contained equipment units.

Easy combination of these units will form any battle-field communication system, from small or large mesh networks to a single point-to-point connection.

- Complete network for all echelons
- Voice, teleprint, facsimile
- Data, circuit and packet switching
- Automatic switching and routing
- Efficient network control
- Eurocom compatibility
- Encryption and ECCM
- High degree of survivability
- Field proven in several countries



DELTAMOBILE

Why DELTAMOBILE?

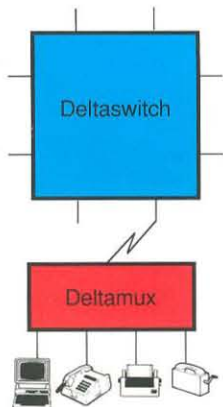
The modern battlefield is characterized by a continually changing tactical situation.

Therefore, the operational staff centres must at any time be able to contact anyone within the area of operation, simply by dialling a number or using a hotline (voice and/or data). Such requirements can only be met through the use of an Integrated Services Digital switched Network (ISDN), like DELTAMOBILE.

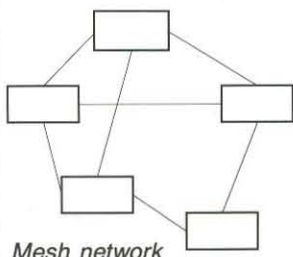
DELTAMOBILE is environment independent and can be installed in military vehicles, tents or permanent buildings. It is designed to comply with the strictest relevant military specifications and the Eurocom standards.

Illustrations show only the nodes of the network. The nodes consist of switch, multiplexer and subscriber equipment.

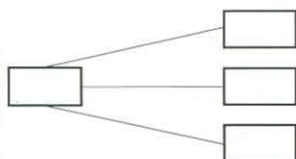
Example of a node:



The nodes can be interconnected in networks as shown below.



Mesh network



Star formed network

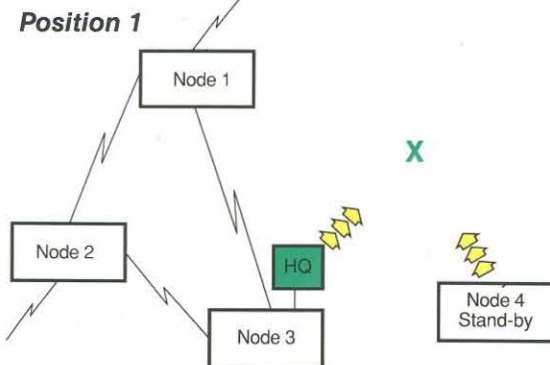


Point-to-point connection

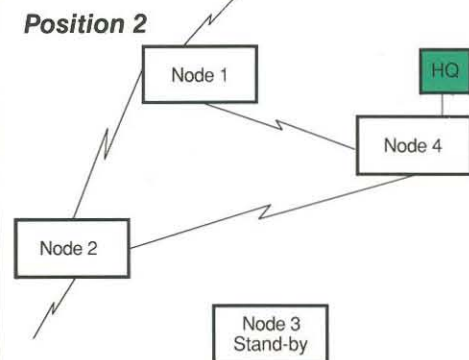
The switching nodes and/or Deltamuxes can be interconnected by bulk encrypted radio link or fibre optic cable

Always on the move

One of the greatest advantages of DELTAMOBILE is its ability to adapt to new situations as the brigade or division moves. In the example below, the formation advances, and the headquarters will have to be moved.

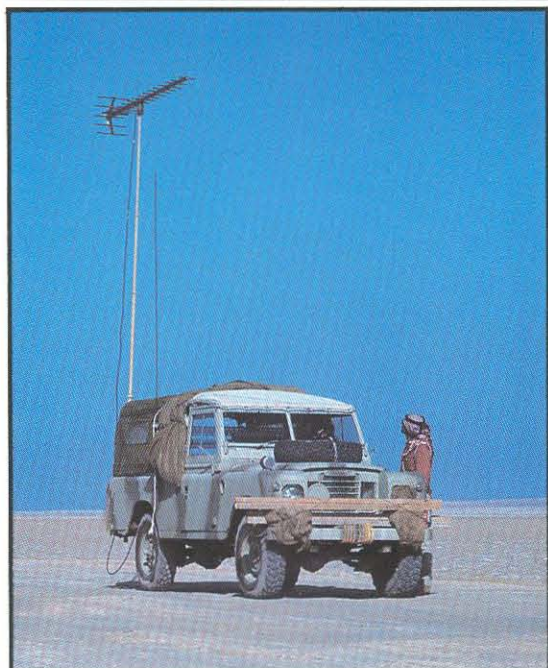


The set-up and tear-down time of a DELTAMOBILE node is very short. (Typically 20 minutes).



When nodes are interconnected, they will automatically be integrated to the specific network configuration. Node 3 is now free to move to a new position.

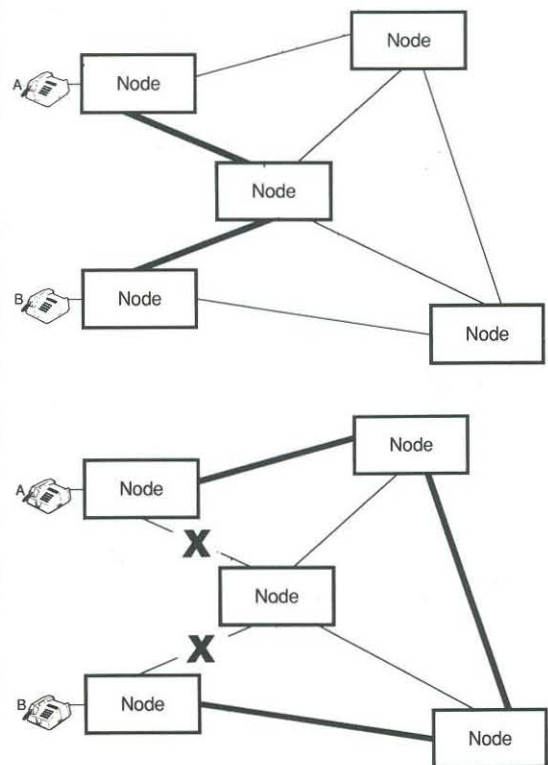
DELTAMOBILE means mobility and flexibility



Automatic switching, routing and rerouting

DELTAMOBILE is the most reliable form of communication in a combat situation. Advanced routing ensures that a call will always reach its destination.

The example below shows how a new call is rerouted in case trunks are damaged or put out of service.

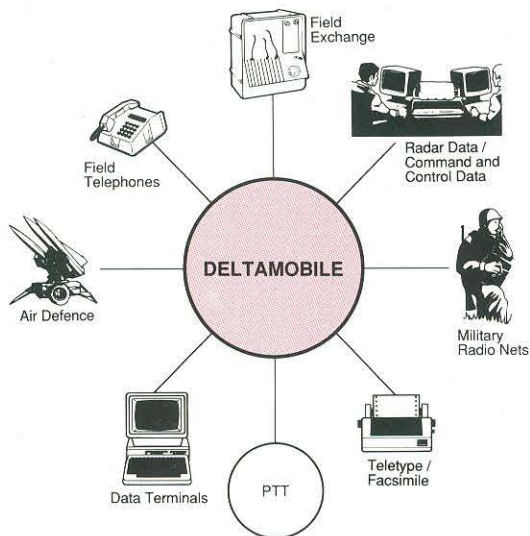


DELTAMOBILE will give you automatic switching of services such as voice, data, teleprint and facsimile

Subscriber Access

DELTAMOBILE accepts direct connection of virtually all types of analogue and digital subscriber equipment, including dial telephones, magneto telephones, exchange lines, facsimile and data equipment.

DELTAMOBILE can be expanded to serve several thousand subscribers.



Field proven

DELTAMOBILE equipment is field proven and deployed in more than a dozen countries throughout the world, ranging from the arctic north to tropic and desert environments.

DELTAMOBILE offers the widest variety of user interfaces available in any system

DELTAMOBILE is a field proven system complying with the latest Eurocom standards



User Advantages

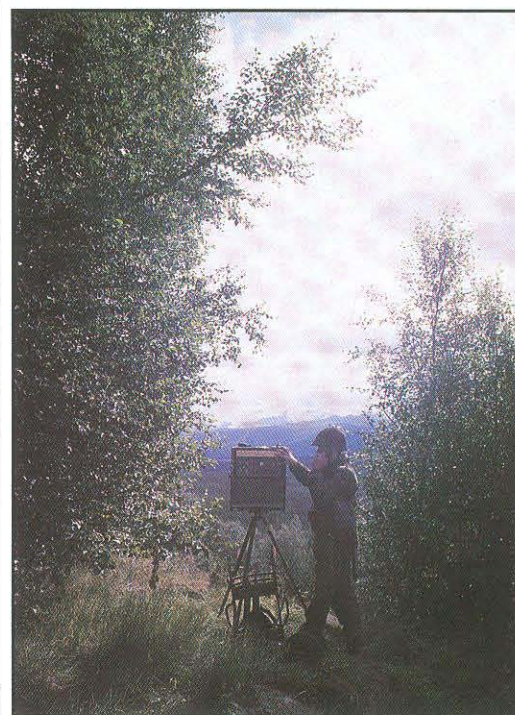
Subscriber facilities include:

- Assignment of numbers independent of location (a subscriber can keep the same number when moving)
- Classification of subscribers, giving some subscribers priority over others.
- Hotlines and sole user lines with rerouting facilities
- Call hold and call forwarding
- Automatic ring-back when engaged
- Conference and broadcasting

Tactical System Control includes:

- Automatic control and supervision of network configuration, telephone directory, network load and statistics
- Initiation of special services

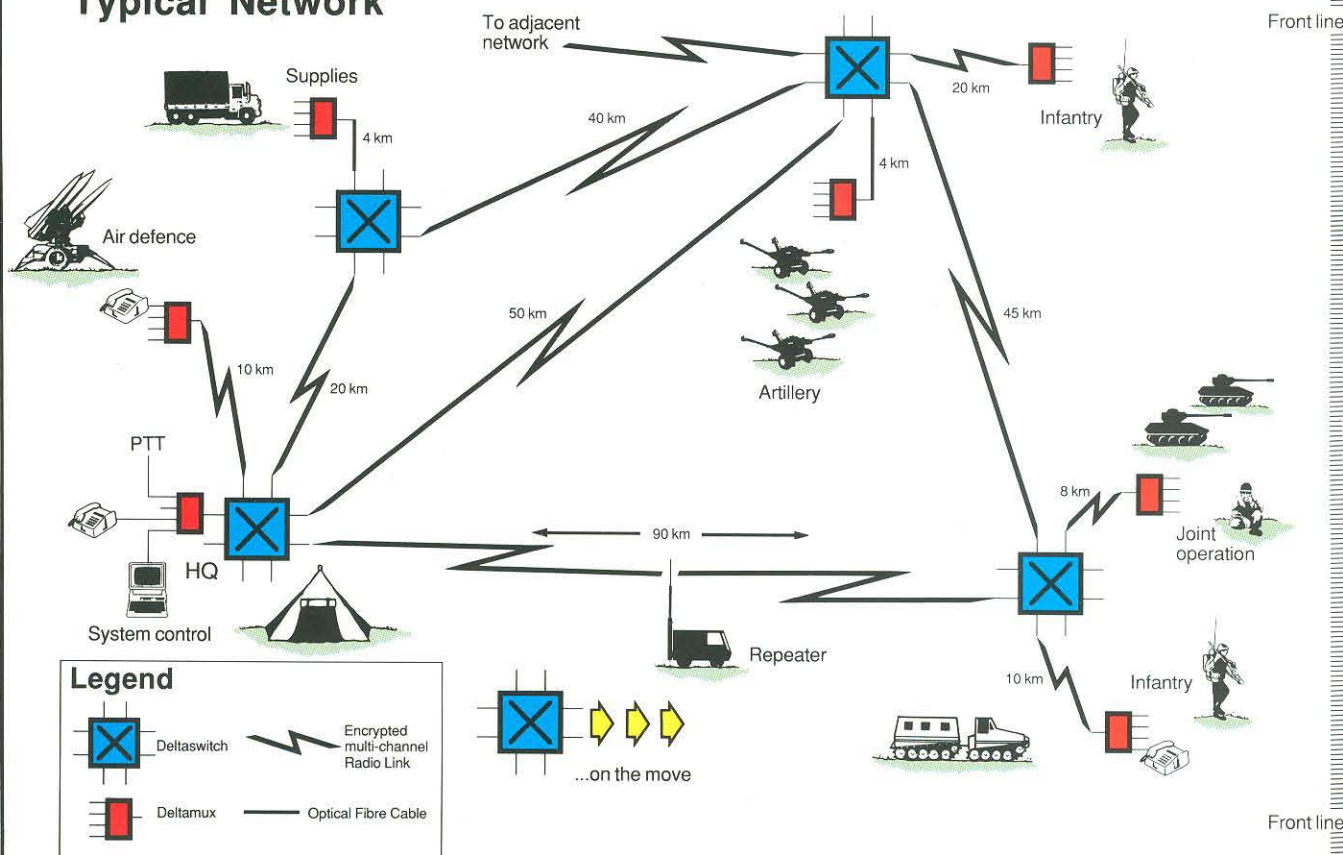
DELTAMOBILE – the tactical trunk communication network for present and future requirements



Operational advantages include:

- High mobility and short set-up time
- Low manpower requirement
- Light weight, low power consumption
- Easy to operate and maintain

Typical Network



This publication is issued to provide general information about the equipment, and is not to be regarded as a complete system specification, or to be used as a contract document. We reserve the right to change the design or specifications for any product without prior notice.

DELTAMOBILE

The Main DELTAMOBILE Units

Deltaswitch (1)

A 240-channel non-blocking switch with 8 ports at 512 kb/s, and a 12-channel integrated packet switch.

Deltamux (2)

A subscriber access unit and multiplexer with built-in interfaces for 15 digital or analogue subscribers.

System Control Unit (3)

Supervises the network and initiates special services.

Deltaphone (4)

A family of data access units and digital telephones

Fibre Optic Terminal

Provides transmission on trunks between DELTAMOBILE units over fibre optic field cable.

Deltacombiner

Combines trunks of 256, 512 or 1024 kb/s to be transmitted on high capacity trunks.

Command Post System

Provides automatic or operator controlled interfaces to both wireless and wirebound subscribers.

Field Telephone

A lightweight analogue LB or CB field telephone system.

Radiolink

Provides multichannel transmission between DELTAMOBILE units in UHF or SHF frequency bands. Built in ECCM facilities are provided.

Bulk Encryption Unit

Provides full high security bulk encryption of the radio link transmission.

Facility Control/Operator Board

Single node control and subscriber assistance.

Packet Switch

Supports switching and concentration for packet mode data equipment.

Message Switch

Offers advanced message handling in the network.

Installation and Power Systems

Provides complete stationary and mobile installation of all DELTAMOBILE units, including complete non-break power systems.



1



2



3



4

EB DEFENCE

a division of EB Netcom a.s

P.O.Box 98, N-1360 NESBRU, Norway
Phone +47 2 84 37 00. Telex 78 758 ebdef n.
Facsimile +47 2 84 82 30

EB CORPORATION - MEMBER OF ASEA BROWN BOVERI

ALCATEL
STK

Standard Telefon & Kabelfabrik A/S

P.O.Box 60 Økern, N-0508 OSLO 5, Norway
Phone +47 2 63 88 00. Telex 74 552 stkdc n
Facsimile +47 2 63 79 44